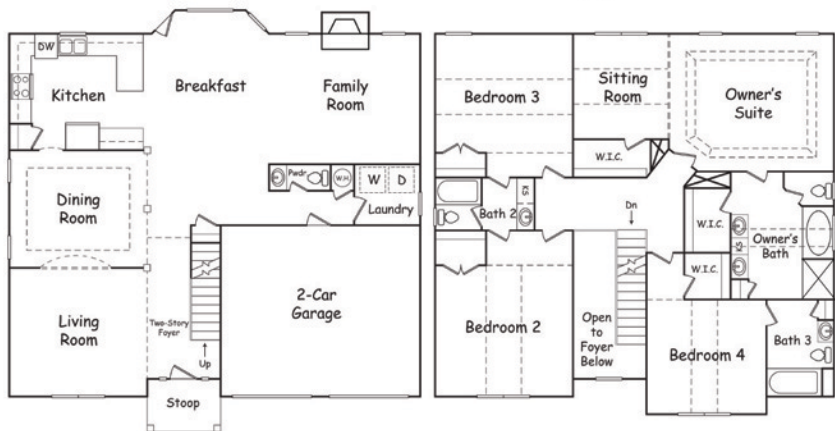




## The Woodbridge



**WOODBRIDGE** – Distinctive 4 bedroom, 3.5 bath single family home. An inviting 2-story foyer and formal living and dining room on main level. Hallway leads to a spacious kitchen with breakfast area, and a sunken family room with fireplace. The second level features a large owner's suite with tray ceiling, vaulted sitting room, walk-in closet, and a vaulted owner's bath with jetted tub and separate shower. Three vaulted secondary bedrooms, one with private bath and spacious closet. Two car garage.

Rendering(s) shown are based on the "Woodbridge" elevation and are artist's conception; note that plans vary by community. Consult blueprints for actual dimensions and specific details. Continuing a policy of constant research and improvement, builder reserves the right of price, plan or specification change without notice or prior obligation.